

Operating the Sufi Resonator

Using the Sufi resonator is a breeze, thanks to its user-friendly functions. The operating sequences are similar to that of a cell phone interface, making it easy to navigate. Each step is set up to be the logical consequence of the previous one, making it intuitive to use.

Maintenance:

Please take note that your Sufi Resonator is a highly sophisticated, specific electronic device. Therefore, it is crucial that you treat it with the utmost care and diligence. To ensure its longevity, keep it clean and dry at all times. When not in use, store it in a waterproof container to prevent any moisture from getting to it. Keep liquids away from your resonator, and make sure you clean the device, electrodes, and cable regularly with a slightly moist, soft cloth.

Before cleaning, be sure to unplug all external power sources to avoid any electrical hazards. Please note that there is only one way to insert the charging cable's plug into the Sufi's charging port. While the accessories are replaceable globally, it's essential to replace them with ones of the same specification. You can find the correct specifications on the back page of this instruction booklet.

Guarantee

Please be advised that while the device comes with a 2-year technical guarantee, there is no guarantee on the consumables such as cables, hand electrodes, plugs, batteries, and chargers. Therefore, it is highly recommended that you inspect the device upon delivery to ensure that everything is in good order. In case of any faulty component, kindly contact your supplier within 48 hours to lodge a fault complaint. This will ensure that any faulty component is repaired or replaced immediately.



The interface of the Sufi Practitioner Resonator makes use of internationally recognizable icons/avatars to depict a specific required action.

+ Means to “increase intensity” **-** Means to “decrease intensity”



Means “to start, action, execute, run a treatment”



Means to “pause an action”



Arrow facing to the right means to “go to the next command”



Arrow facing down means to “scroll down”



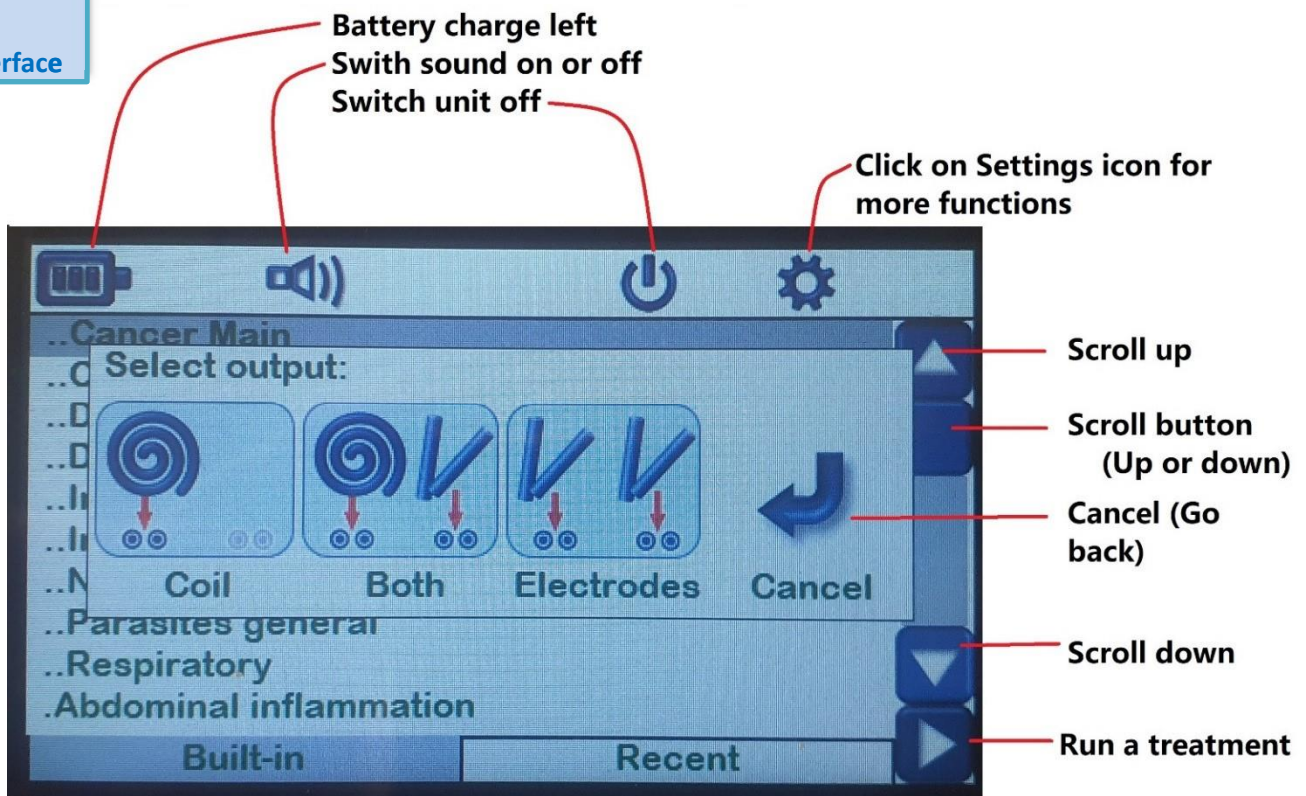
Arrow facing upwards means to “scroll up”



The “return arrow” icon means “to go back/exit”



Press on the “Settings” icon to open more commands.



Adding treatments:

The Sufi Resonator allows users to add their own treatments directly. Just press on the “Setting” Icon then press on “Add program” and commence with the steps.



Just follow these steps to commence a treatment:

1. Switch on power by pressing the “On” Button on the side of the unit.
2. Select programme/treatment on display by pressing the down arrow.
3. When treatment is selected press the “Play” button ►.
Name of treatment and duration will appear on the screen. Press the “Play” ► icon again to activate treatment. Select treatment application between Hand electrodes or coil (Beamer Healthpad) or two sets of hand electrodes.
4. **Repeat function.** Press the “Play” ► button for about 2 seconds until the repeat function is activated. Select how many times this specific treatment needs to run. The maximum repeats are 9 times.
5. By pressing either the “+” or “-“ icons one can increase or decrease the **Intensity**.
6. Hold an electrode in each hand (See the Resonance Therapy Manual in this regard).
7. One can press the “Pause” (||) icon to temporally **pause** the treatment and press the “Play” ► icon when treatment needs to be resumed.

Hold an electrode in each hand and adjust the intensity until you feel the vibration of the resonance Sufis comfortably in both wrists. The device will start with low frequencies and gradually increase to higher frequencies during the treatment. The higher frequencies produce less vibration through the hand electrodes, but the resonant Sufis keep their effectiveness. **Note that one does not feel vibrations from the Healthpad.**

Simply set the pads on the highest intensity. At the end of the treatment sequence, the device will turn off automatically after a few minutes if no other option is selected.



One can disable the beep sound if necessary, by pressing slightly on the “speaker” icon.

Do not use the resonator while charging the battery, unless running the treatment via the Healthpad

Sufi Resonator Accessories and Peripherals

One of the several advantages that the Sufi Resonator range has over other Sufi frequency generator attempts, is that you can travel anywhere in the world and will be able to locally source the accessories needed to apply treatments if they are damaged or lost.

Charger adapter

When using the Sufi Resonator, make sure to only use a 5-volt USB charger with a 2-ampere capacity. If you're traveling to a country that has different inlets than the EU charger that comes with the device, you can easily purchase a charger with the required specifications locally. However, **avoid using a fast charger** that is typically supplied with cell phones.



Charging and data transfer cord.

Use only a “USB 2.0 Cable Type A Male to Micro-B” charging and data transfer cord. Please be careful when inserting the plug-ends into the charger and the Sufi unit. If the does not want to go into the charging port of the Sufi unit, turn the plug around and try again. **Do not force it in**. This cord can also transfer data from a computer to the Sufi Resonator.

Electrode cables.

The electrode cables transfer the current to either the hand electrodes or a Healthpad. The Sufi Resonator uses two standard 4mm banana plug test cables that are internationally available at electronic component shops as electrode test cables. Most of the time, when there are technical problems with a loss of current output from a Sufi unit, it is probably a loose connection in the electrode cable connections.

The Sufi Resonator has a built-in “tester”. Connect a cable in a loop to the resonator’s sockets. Press the “Settings” icon and press “Test Continuity”. A “beep” noise means the current is indeed flowing.

Power:

The Sufi Resonator can run safely on its rechargeable battery or directly on mains (110 or 220 volts) through the 5-volt charger adapter power. Be careful of potential electrocution with other Sufi generator brands. Connect the charging cable and charger to an electrical power socket and charge the battery for 3 hours. Ensure the battery is completely depleted before recharging. Connect the charging cable and charger to an electrical power socket and charge the battery for 3 hours.

Battery:

A Sufi Resonator uses a “**Model 18650**” **unprotected flat top 3000 mAh, 30A, 3.7V** rechargeable battery. This battery's length is 65 mm. A similar battery is available that is about 2 mm longer because it has a protected flat top. Please do not use this battery as it is too big. The battery can easily be replaced by unscrewing the screws underneath the unit. Ensure that the battery poles match the positive and negative placements when inserting the battery. If you would like help replacing the battery, you are most welcome to reach out to your supplier for assistance.

